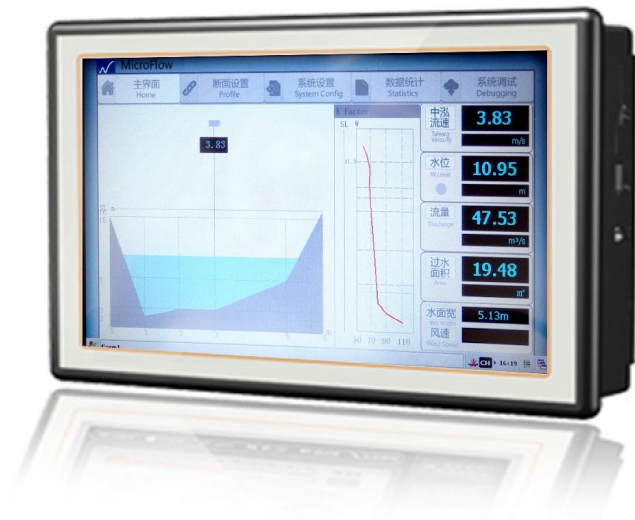
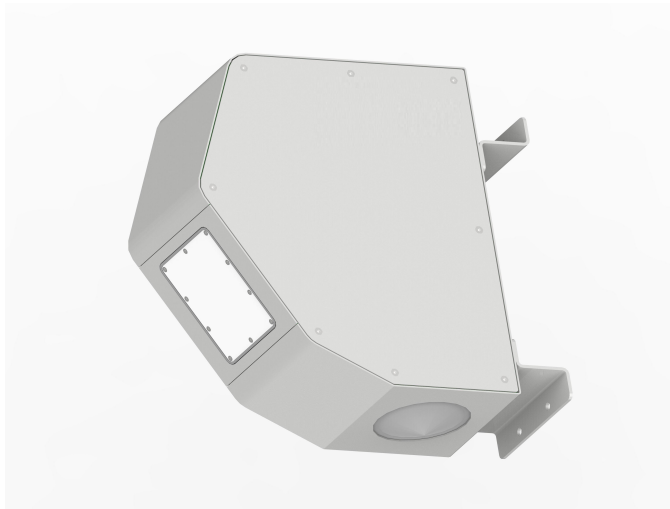


RSS-2-300W-QX Radar Flow Meter



Key Features

- Non-contact measurement of water velocity, level & discharge
- Velocity measuring range up to 15 m/s ,accuracy up to $\pm 0.02\text{m/s}$
- Water level Measuring range up to 20 m,accuracy up to $\pm 3\text{mm}$
- Insensitive to fog, precipitation and temperature
- Installation with minimal construction work
- Maintenance free
- Dual direction flow measurement
- RS-232 & RS-485 interface
- Compact, Low power consumption

Revolutionary Radar Type Flow Meter For Open Channels

RSS-2-300W-QX provides precise contact-less measurement of surface flow velocity, water level and discharge. Contact-less radar technology enables quick and simple sensor installation above the water surface, and requires minimum maintenance.

RSS-2-300W-QX flow meter is used to monitor flow velocity of open channels such as rivers, irrigation canals or sewer systems, and for monitoring and control of hydro power plants and waste water treatment plants. The flow meter is also suitable for various mass flow metering applications in mining processing plants, industrial installations, and, due to operation without moving parts and robust mechanical design, is ideal for measurement of flammable fluids and harsh chemical applications.

Reliable Measurement Accuracy

By introducing the superior radar technologies, measurement accuracy of radar flow meter is not influenced by air humidity (including fog), precipitation, air temperature, fluctuations, driftwood, debris & Sediment concentration etc. Further advantages include the low energy consumption, short measuring cycle, minor dead angles and the short mounting distance. Possible false echoes caused by nearby supports etc, are removed by internal configuration of the software.

RSS-2-300W-QX radar operates in K-band (at 24.125 or 24.200 GHz), and provides flow speed & level readings 20 times per second over serial (RS-232, RS-485) interfaces. Variety of supported communication interfaces and protocols enable easy integration with existing telemetry equipment and SCADA systems.

Clear and Easy Installation

Installation is easy with minimum construction work. RSS-2-300W-QX is excellent where driftwood, debris, water traffic, or ice could damage stilling wells or other structures. The device can easily be relocated in the event of a storm changing the flow pattern, or if the river bed is sandy.

Conformity

EN50293:2000,

EN61000-6-2, EN61000-6-4:2007



RSS-2-300QX Radar Flow Meter

Technology	Radar Doppler and Impulse	Vibration resistance	with 4 g and 5g..100Hz
Velocity Measuring Range	0.1-15/s	Housing/Protection	IP67
Velocity Measuring Accuracy	±0.02 m/s	Operating temperature	-40-80°C
Velocity Measuring Resolution	1 mm	Interface	RS-232/485
Level Measuring Range	20 m	Measuring Mode	Continuous
Level Measuring Accuracy	±3 mm	Electromagnetic Compatibility	CE,FCC
Level Measuring Resolution	1 mm	Dimension	325*280*135
Operating current	Typ.150mA at 12V DC	Weight	~7KG

Order Code	RSS-2-300W-QX	RSS-2-300W-QX-30
Measuring Range	Velocity 0.1-15m/s, Level 0.1-20m	Velocity 0.1-15m/s, Level 0.1-30m
Communication Interface	-RS-485/232 -Baud rate 9600 bps -8-bit,none parity, -1 stop bit	-RS-485/232 -Baud rate 9600 bps -8-bit,none parity, -1 stop bit
Power Supply	9..24VDC	9..24VDC
Protocol	Modbus RTU	Modbus RTU
Beam Angle	Velocity Sensor 12°, Level Sensor 8°	Velocity Sensor 12°, Level Sensor 8°
Touch Screen Controller (HS-7)	Optional	Optional

